

Press Release

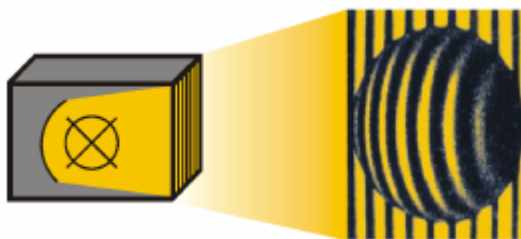
december 2004

CAM^{3D} and SCAN^{3D} – fast and precise

The optical fringe projection sensors CAM^{3D} and SCAN^{3D} enable complete surface measurement of an object within a third of a second - whatever its nature and size, and without contact. The generated point clouds are available immediately after measurement and can be computer processed to create a triangle mesh within a few minutes. The software SLIM^{3D} is at ease in visualizing the data on screen and allows Reverse Engineering. Apart from the application of optical 3D-measurement in Medicine and Automotive Industries, its importance in Mold Making continues to increase. It allows to reproduction automation and immediate surface quality control. The user will benefit from the easy handling of this sensor and software."

For more information, please visit our webpage http://www.3d-shape.com/home/home_e.php.

3D-Shape GmbH is an offshoot of the Institute for Optics, Information and Photonics of the Friedrich Alexander University Erlangen-Nuremberg and develops and markets optical sensors for the three-dimensional measurement of a wide variety of objects and surfaces.

**Yours sincerely**

Your 3D-SHAPE-Team

Contact: Sabine Schiffer
Communications and Public Relations
Henkestraße 91
D-91052 Erlangen

Tel.: +49 9131/ 977 959-10
Fax: +49 9131/ 977 959-11

Email: schiffer@3d-shape.com
URL: www.3d-shape.com